

Join Our Movement of Positive Change

The Kolo Nafaso direct shea-sourcing programme

Shea grows naturally and is harvested manually; there are no plantations.

Women's Empowerment

The shea-collecting women become empowered economic actors with an independent income.

Significant Impact

More than 320,000 women – working together in women's groups – have a significant impact on the lives of 1.5 million people in West Africa.

Resource Efficiency

The shea collectors are taught how to steam instead of boil the kernels, to save on water and wood.

Easy Access to Clean Water

Bonuses enable women to invest in initiatives that benefit the entire community, such as wells for clean water.

Income Diversification

Kolo Nafaso helps women to invest in future income-generating activities, such as the trading of seeds.

Education

Women invest in their children's education.

The Shea-collecting Women

Collecting shea is a source of steady income for women in West Africa, creating a ripple effect for the good of their communities.

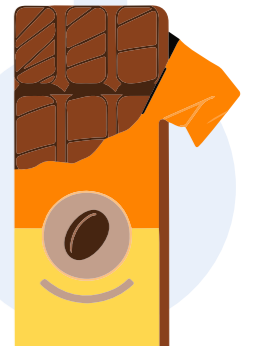


Consumers

Consumers know their actions and choices have an impact. Every bite of chocolate contributes to strengthening this positive ripple effect.

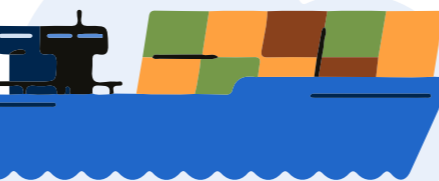
Chocolate

Manufacturers and consumers get more than sustainability claims; high quality, great texture and excellent taste too!



AAK Extension Officer

The AAK extension officers visit the villages, weigh the kernels, and do transparent and direct business with the women. Year after year.



Chocolate Manufacturing

The manufacturer producing the chocolate is guaranteed traceability and a sustainable supply chain.

